

“This is not a game”



The Bridge at Daru

No Dice. No Rules

William F. Owen

Outline



A demonstration and discussion of how the NDNR system can train commanders and staff, and/or develop capability insights from Theatre plans to individual equipment carriage.

Real world planning executed against a live opponent in a wargame.

Order of Battle



Pink Forces

2 x Infantry Brigades

- 4 Bns
- 1 x Light Gun Regiment
- 1 x Eng Field Coy
- 1 x Medevac Sub-unit
- 1 x Supply Company
- 1 x ES sub-unit (REME)

Purple Forces

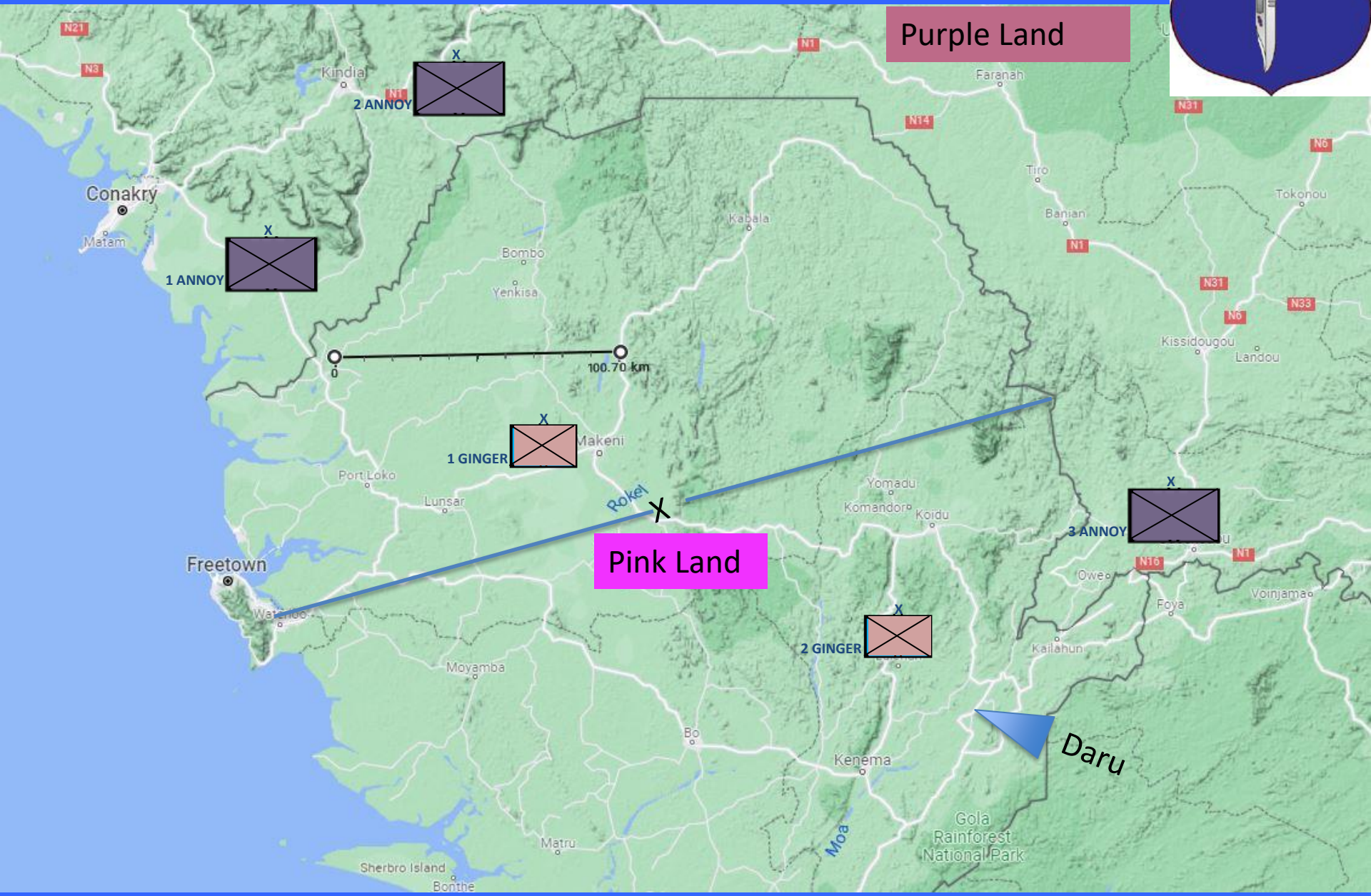
3 x Infantry Brigades

- 3 Bns
- 1 x Light Gun Regiment
- 1 x Eng Field Coy
- 1 x Medevac Sub-unit
- 1 x Supply Company
- 1 x ES sub-unit (REME)

Equipment Capability?

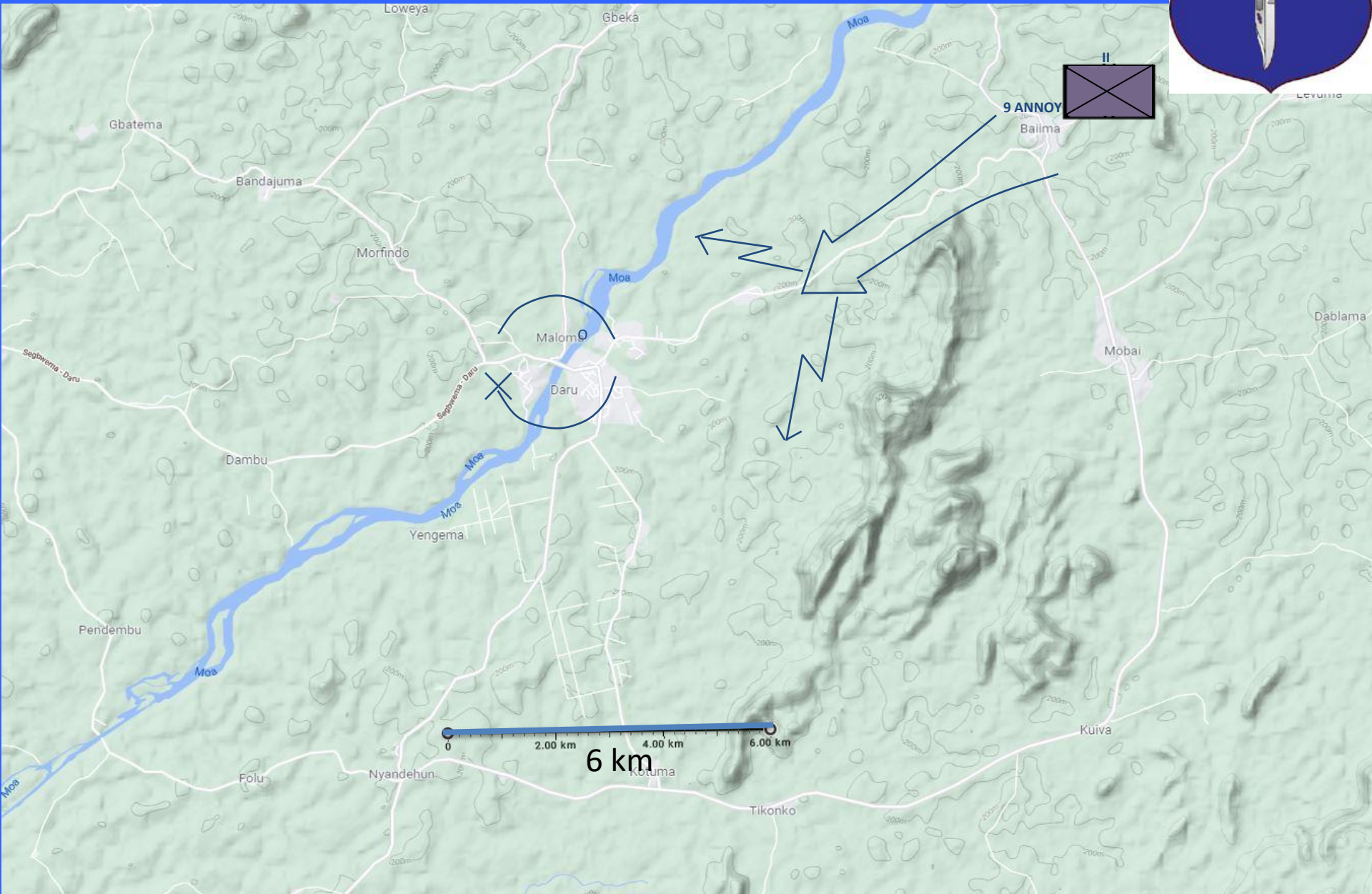


Special Idea. Theatre Context

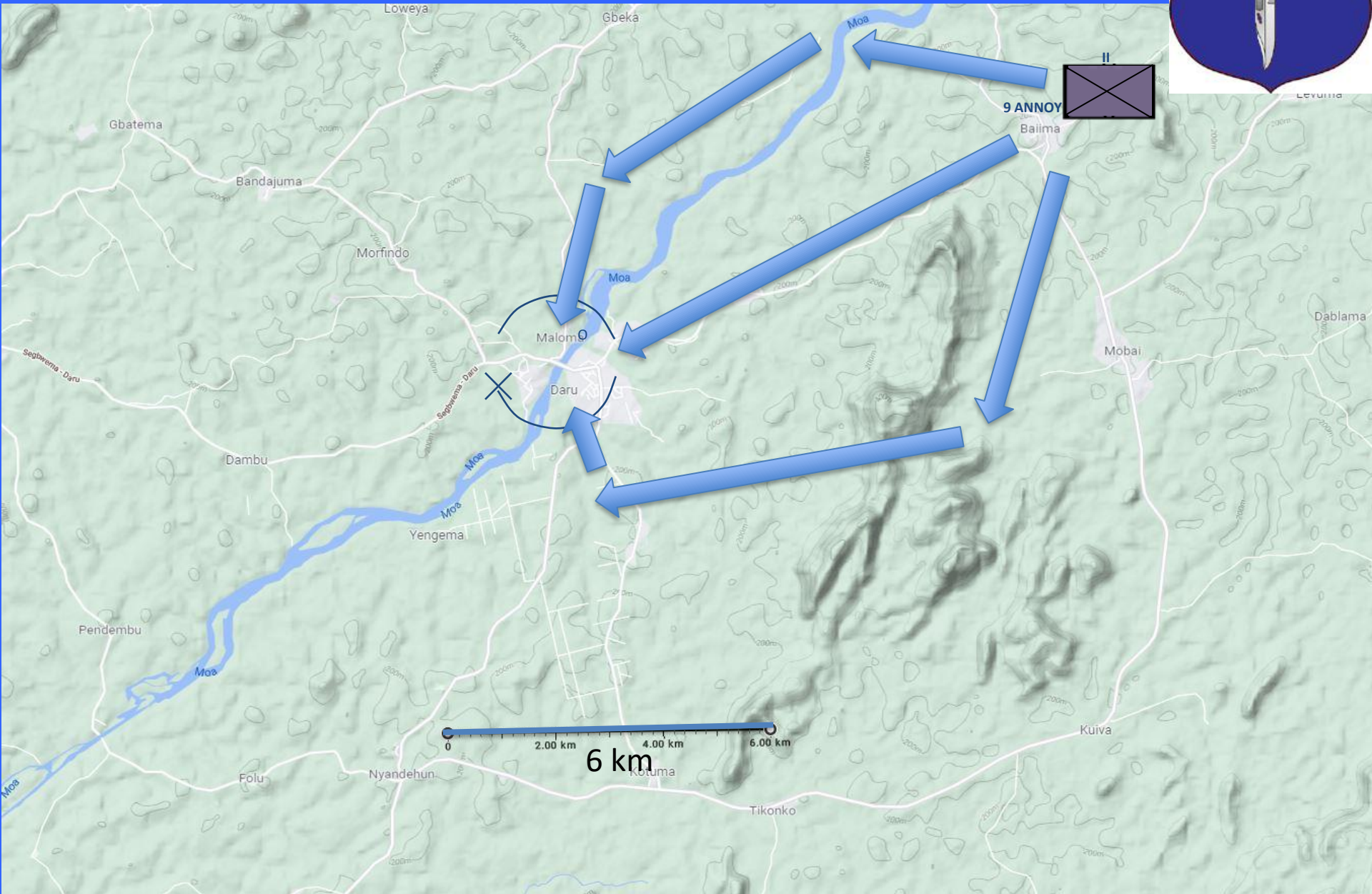




Situation 12:00 H+1



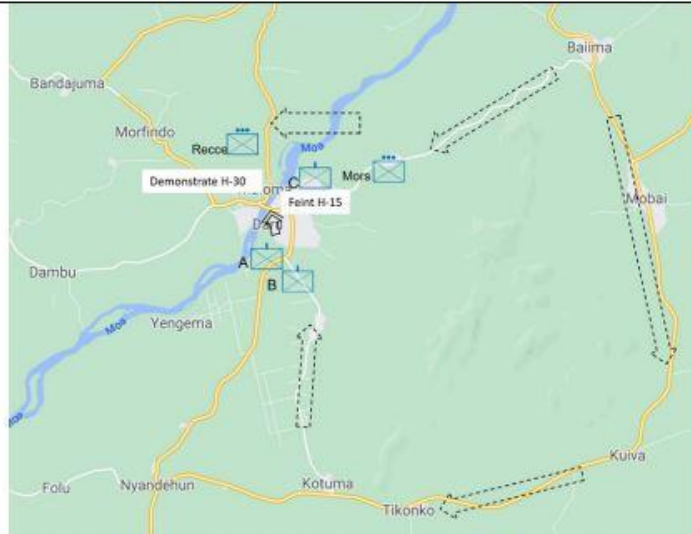
Purple Outline SOM







CONOPS



Task Org: Blue Bn at full strength – 3 x Rfl Coy, Recce PI, Mor PI, MG PI atts to Rfl Coys

SITUATION (see sketch)

RED Coy centred on W Daru. Coy Mission is to prevent EF crossing the Bridge at Daru - IOT to Delay the BLUE

Adv until the Red Brigade Reserve Arrives – approx. 8 hours from Daru. Assessed locns: Rfl PI and Coy HQ in fortified houses in Daru – cover 360°

Rfl PI in 8 x 4 man bunkers on high ground SW MSR covering to W & S.

Rfl PI in 8 x 4 man bunkers covering MSR, Main Bridge and exit to the N Bridge with 4 x bunkers covering 180° S

Arrows indicate preferred withdrawal. Vehicles are on the 1 and 2 plt positions but in cover next to buildings or in dead ground.



MISSION:

1st Ble Bn is to Capture the bridge at DARU by 0700 IOT allow Bde to advance west.

EXECUTION

CONOPS

1. Intent. Bn will FEINT & DEMONSTRATE to DECEIVE. ATTACK to DEFEAT EF holding N end of Daru Bridge to SEIZE & SECURE bridge for onward FPL of Bde.
2. SoM. Recce PI cross R MOA north of obj. at H-30, DEMONSTRATE to DISRUPT EF defences, sp by mor pl. At H-15, C Coy FEINT to DECEIVE EF that attack is coming from NE, sp by mor pl. At H-Hr, A Coy ATTACK to SEIZE obj from SW. ME is attack from SW and lies with A Coy.
3. Endstate; EF holding Daru Bridge defeated & bridge seized & secured by 0700.

4. Sub-unit Missions/Tasks/Priorities

- a. A Coy (BH Force): ATTACK: capture the bridge at DARU by 0700 IOT allow Bde to allow Bde FPL for advance west.
- b. B Coy (Res). ATTACK. Res for initial phase – pris (1) sp to A Coy, (2) sp to C Coy. On Os, switch to Breakout Force to establish BH to LOE IOT allow Bde FPL for advance west.
- c. C Coy (In-Place Force): ATTACK from H-15 to DECEIVE EF of attk from NE & sp A Coy attk. On Os, switch to Res. IOT allow Bde FPL for advance west.
- d. Recce PI: ATTACK: Cross R MOA N and DEMONSTRATE from H-30 to DISRUPT EF defences IOT allow Bde FPL for advance west.
- e. Mor PI: Fire Sp pris – (1) Recce PI, (2) C Coy FEINT, (3) A Coy ATTK, (4) B Coy breakout.

5. Coord Instructions

- a. Timings:
 - i. 0500 NLT on LD
 - ii. H-30: Recce PI disruption attk
 - iii. H-15: C Coy feint attk
 - iv. H-Hr 0600: A Coy attk on bridge
 - v. 0700 BH secure
- b. Locns:
 - i. A Coy - SW of Obj
 - ii. B Coy – 300m SW of Daru
 - iii. C Coy – NE of Daru
 - iv. Recce PI – NE of Daru
 - v. Mor Line locn – 2km NE of Daru
 - vi. RAP & A1 Ech – 500m S of Daru

CSS

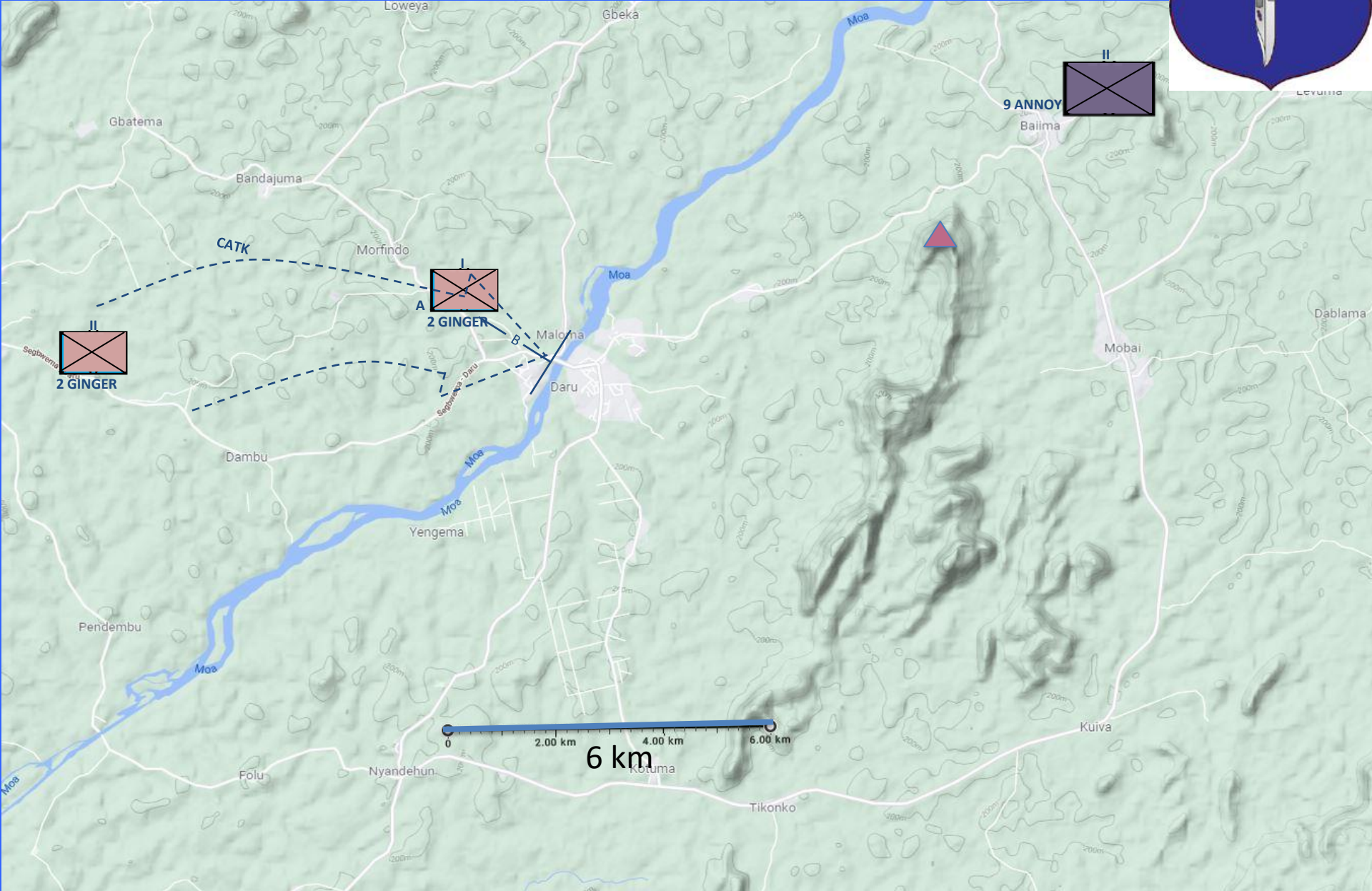
SOPs less tpt

Transport. Recce PI covert mov using technicals. Dismounted river crossing using local means, rubber dinghies or floatation packs

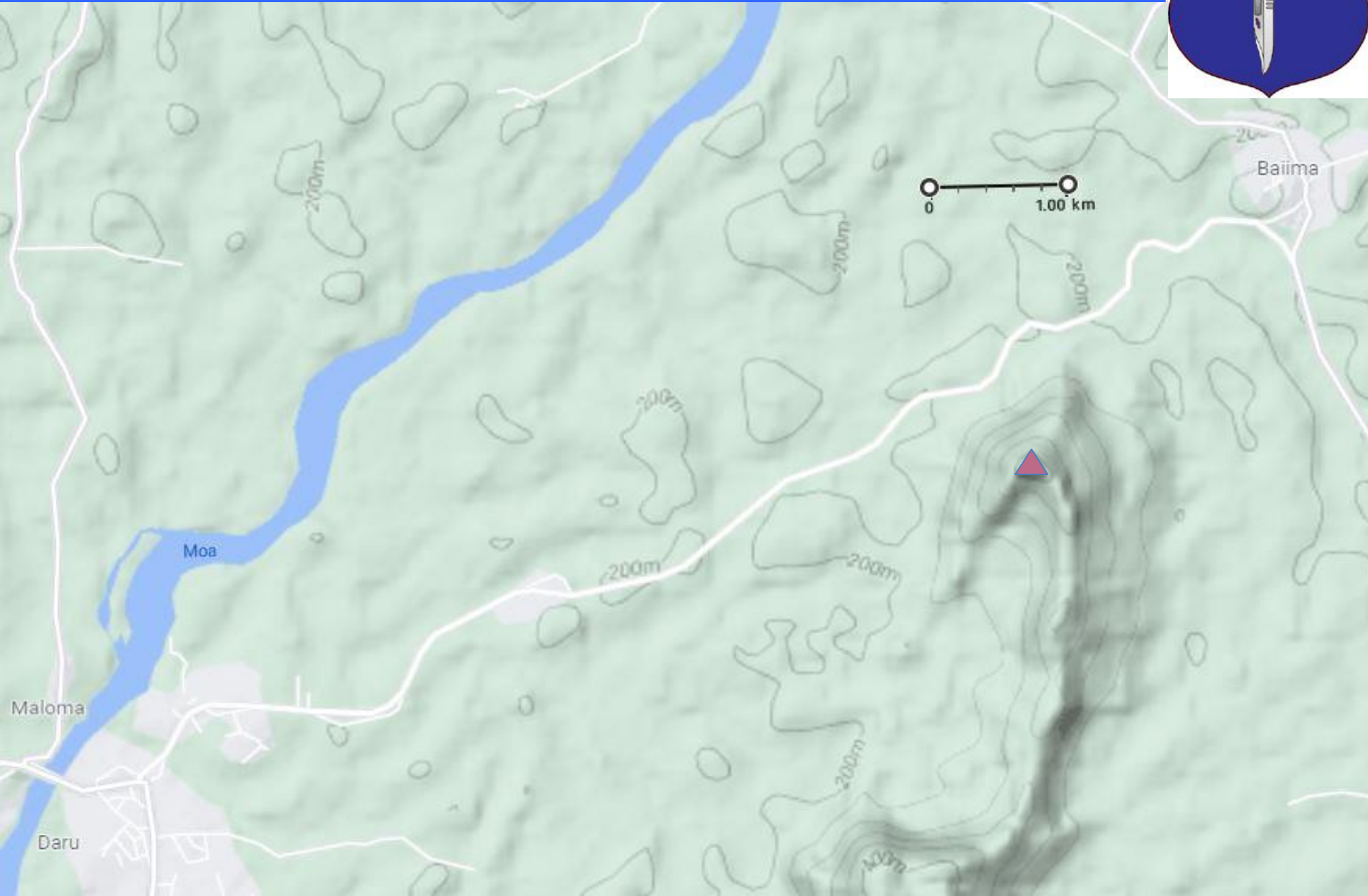
COMD & SIGS

SOPs

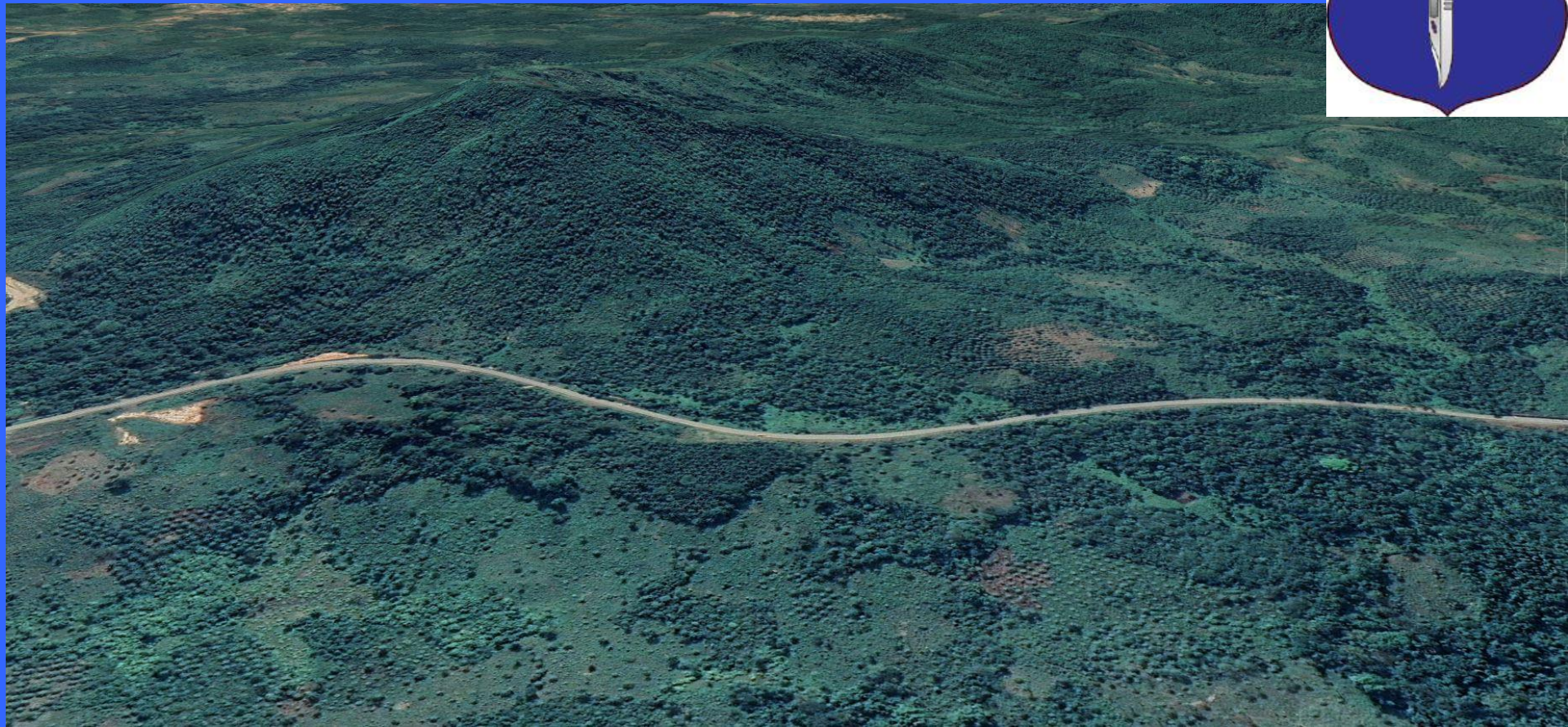
Pink Plan



Baima Road OP context



The Baima Road O.P.



+ 200m Altitude
700m from the road

6.8km from Daru
2.6km from Baima

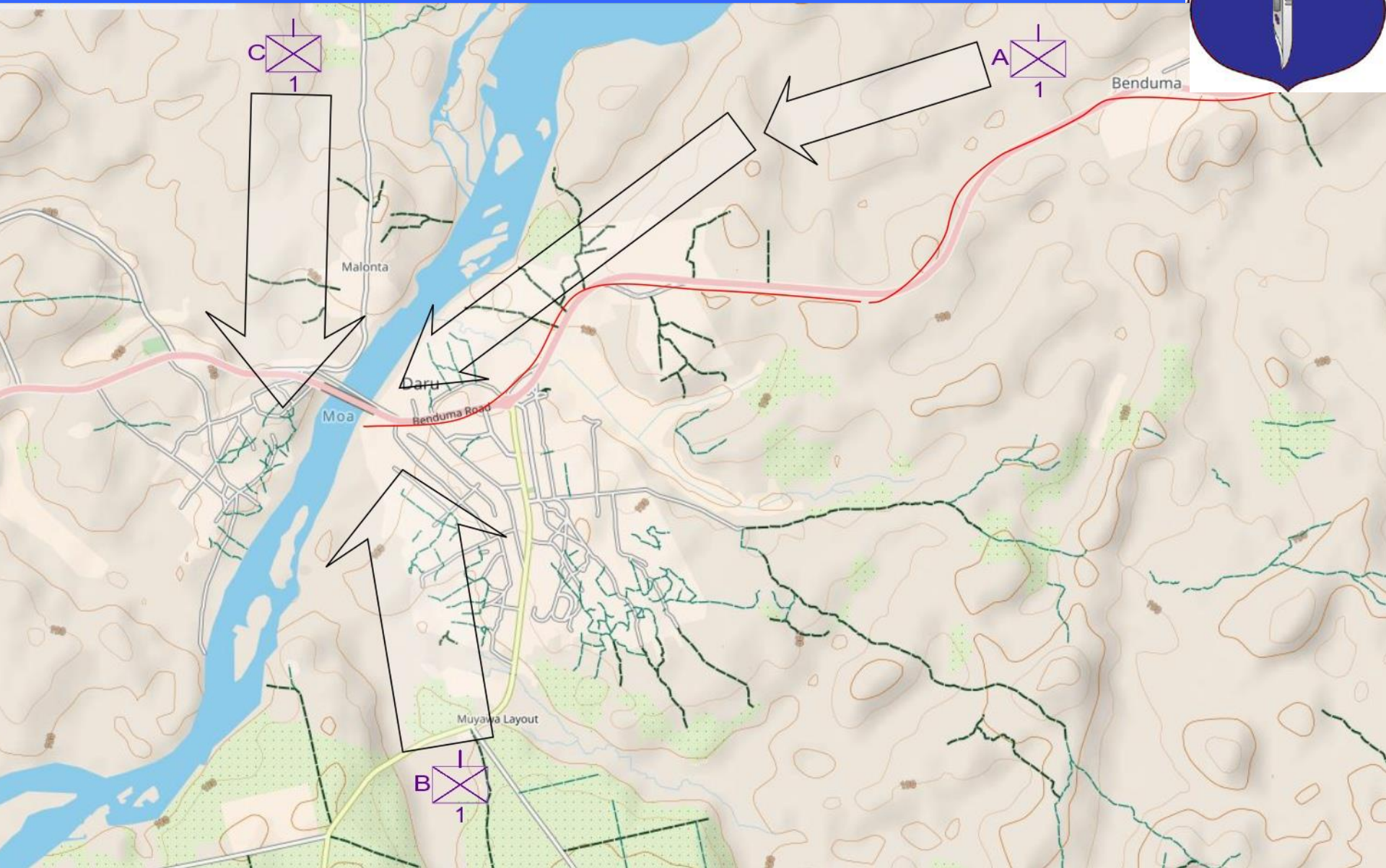
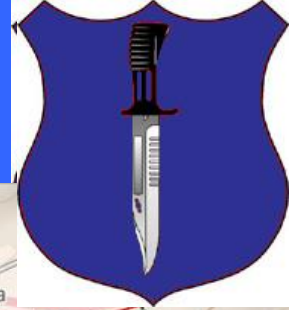
Blow up the Bridge?



Pink Defensive Laydown



Purple Attacks



Purple SITREP as of 07:00 H+2



- **Situation**

- Enemy is dug in, in bunkers, on the high ground south of the road overlooking the western exist of both bridges.
- C Coy has identified more positions in depth both to the North and the south of the road.
- Enemy estimated at COY(+)
- All attempts to cross the bridges have failed.
- All C/S are currently Green Ammo, and Water but Amber Rations.

- **Locations**

- A Coy is observing across the river South of the Bridge, attempting to spot enemy positions for Mortars.
- B Coy same north of the Bridge.
- C Coy, has fallen back 300m NW of the Bridge.

- **Casualties**

- A COY 3 KIA, 6 Wounded- 2 Seriously
- B COY: 2 Wounded.
- C OY: 6 KIA, 11 Wounded. 1 Seriously

Pink SITREP as of 07:00 H+2



- **Situation**
 - Enemy Attacked 05:30 from north of position on West bank. Crossing point unknown
 - Simultaneous attempts to cross bridge failed
 - Sporadic Mortar fire continues
 - Ammunition amber
- **Locations**
 - No Change.
- **Casualties**
 - 1 KIA. 7 wounded.



Can you come up with a better plan?

QUESTIONS